

# S/PS 148

---

Centro progetti Tecno  
.80

# S/PS 148



## INTRO

148 Series chairs were designed by the Centro Progetti Tecno in the wake of the 142 Series created by Eugenio Gerli in the 1960s. They have a slightly squarer, more minimalist look than the earlier series. The basic concept remains the same: that of fully upholstered chairs that are capable of blending in with home, work and hotel environments.

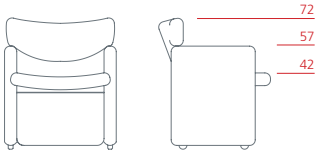
Like its predecessor, the 148 Series comprises two different types of chair: a higher, upright chair for table use (the S148), and a lower, more relaxing lounge or conversation chair (the PS148). The internal structure is in metal. The all-over upholstery consists of polyurethane foam with fabric or leather covering. Customers can choose between feet or wheels.

## DESIGNER

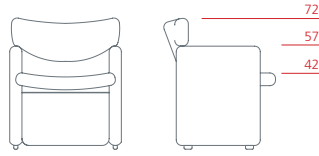


Centro Progetti Tecno

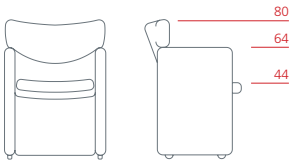
# S/PS 148



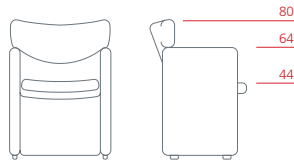
Armchair on castors  
**1PS6041:** L 64 D 64 H 72



Armchair on feet  
**1PS6042:** L 64 D 64 H 72



Tall armchair on castors  
**1PS6051:** L 58 D 56 H 80



Tall armchair on feet  
**1PS6052:** L 58 D 56 H 80

# S/PS 148

## UPHOLSTERY

---

See the following fabrics and leathers list

## Fabrics 1/4

### TC (Category 01)

---

CUSTOM

CUSTOMER OWN FABRIC

### LANI (Category 02)

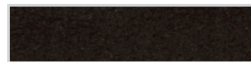
---



LIGHT GREY



DARK GREY



BLACK



BROWN



OCHRE



MUSTARD



ORANGE



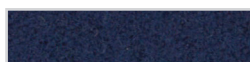
LIGHT RED



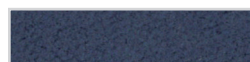
DARK RED



LIGHT BLUE



DARK BLUE



POWDER BLUE

# Fabrics 2/4

## FIELD (Category 02)

---



BLACK - WHITE



GREEN GREY



BLACK



CHALK



SAND



YELLOW



RED



PURPLE



BLUE PURPLE



PETROLEUM BLUE



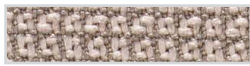
LIGHT GREEN



KIWI GREEN

## METRIC (Category 02)

---



GREEN GREY



SAND



BROWN



MAGENTA



RED



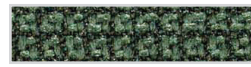
ORANGE



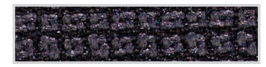
YELLOW



GREEN



OLIVE GREEN



BLACK - GREY



DARK GREY



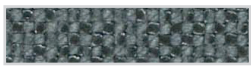
CLASSIC BLUE

## HOT (Category 02)

---



WHITE



DARK GREY



BLACK



CREME



SAND



BROWN



YELLOW



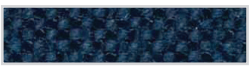
OCBRE YELLOW



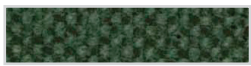
ORANGE



PURPLE



CLASSIC BLUE

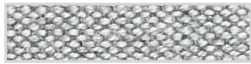


OLIVE GREEN

# Fabrics 3/4

## REMIX (Category 02)

---



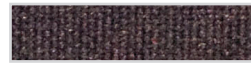
LIGHT GREY



GREY



SAND



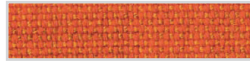
BURGUNDY



COFFE



EARTH



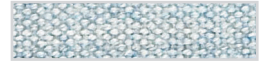
ORANGE



BLUE SKY



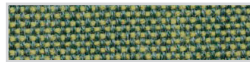
PETROLEUM BLUE



AQUAMARINE



LIGHT GREEN



GREEN

## STEELCUT TRIO (Category 03)

---



WHITE - BLACK



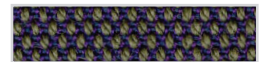
WHITE - GREY



WHITE - RED



BEIGE



BROWN - PURPLE



OCHRE YELLOW



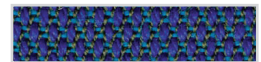
ORANGE



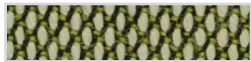
MAGENTA



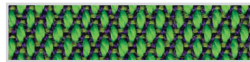
ICE



PURPLE - TURQUOIS



GREEN - WHITE



GREEN - PURPLE

## STEELCUT 2 (Category 03)

---



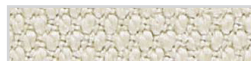
CREME



GREEN GREY



BLACK



KHAKI



BROWN



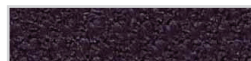
YELLOW



ORANGE



RED



AUBERGINE



CLASSIC BLUE



LAWN GREEN



OLIVE GREEN

# Fabrics 4/4

## DIVINA (Category 03)

---



CHALK



BLACK



SAND



YELLOW



ORANGE



RED



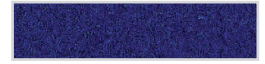
MAGENTA



PURPLE



ELETTRIC BLUE



CLASSIC BLUE



LIGHT GREEN



KIWI GREEN

## HALLINGDAL (Category 03)

---



CREME



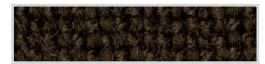
GREY



BLACK - GREY



BROWN - GREY



BROWN



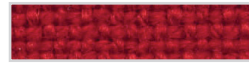
OCHRE YELLOW



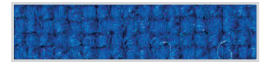
ORANGE



ORANGE - MARS



RED



ELETTRIC BLUE



PURPLE

# Leather

## LEATHER (Category 04)

---



WHITE



CHALK



CREME



SAND



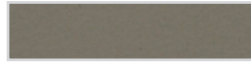
SAHANA



KHAKI



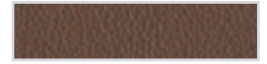
HEMP



BRACCO



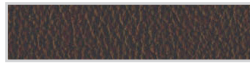
GREY



COCOA



BLACK TEA



COFFEE



DARK GREY



SLATE GREY



BLACK



MIDNIGHT BLUE



BLUE



DARK GREEN



OLIVE



AVOCADO



CREAM



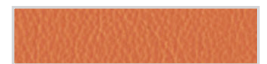
OCHRE YELLOW



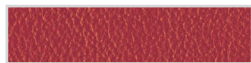
MANGO



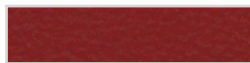
GRAPEFRUIT



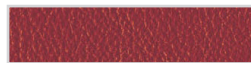
ORANGE



RED



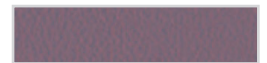
CRIMSON



DARK RED



BLACKBERRY



MAUVE